

CP Series Hydraulic Condensate Pots are designed and configured in six layouts to fit the application as per client's requirements.

DK-LOK "CP" Series HYDRAULIC CONDENSATE POT

"CP" Series Condensate Pot Part Listing

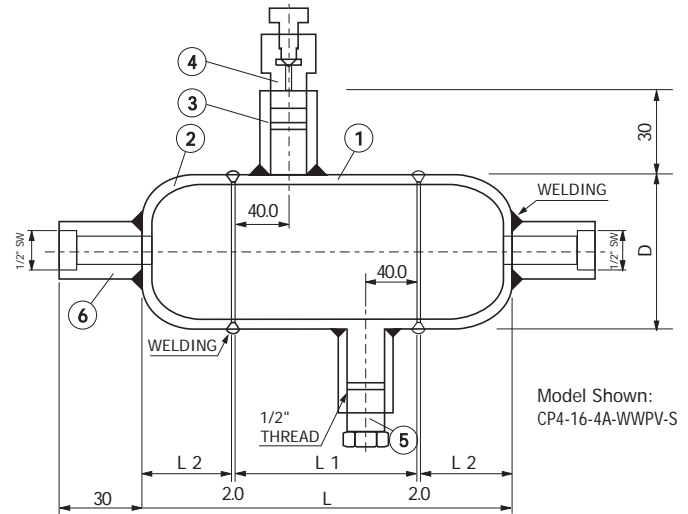
1	PIPE
2	CAP
3	HALF COUPLING (CHC)
4	VENT PLUG (CVP)
5	HEX HEAD PLUG (CHP)
6	SOCKET WELDING HALF COUPLING (CHCSW)

Table of Dimensions

Unit: mm

PIPE	D	L	L1*	L2
3"	88.9	214	110	50
4"	114.3	360	229	63.5

* L1 length is adjustable to fit client's requirements.



Ordering Information

To order CP Series, prefix "CP" and build up an ordering number by combining the designators in the sequence below.

An example of ordering number: CPJ3-16-4A-WWPV-S

CPJ3

-16

-4A

-WWPV

-S

Pipe OD

Designator	Pipe OD	
2	2" ANSI	60.32mm
3	3" ANSI	88.90mm
4	4" ANSI	114.30mm

Designator	Pipe OD	
J2	2" JIS	60.5mm
J3	3" JIS	89.1mm
J4	4" JIS	114.3mm

Pipe Schedule

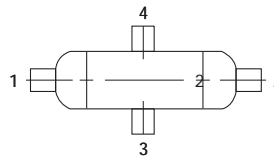
Designator	Pipe SCH
4	SCH40
8	SCH 80
16	SCH 160
X	SCH XXS

POT Configuration

Designator	Configuration
2A	
2B	
3A	
3B	
3C	
4A	

POT End Connections

End connectors are described by first the run (1 and 2) and next the branch (3 and 4).



End Connection	Designator
1/2" NPT	N
1/2" PT	R
1/2" SW	W
1/2" DK-LOK	D
Vent Plug	V
Hex Head Plug	P

• Fittings on end connection are selected as per the Pipe Schedule Rating.

Pipe Material

MATERIAL	Designator
ASTM A312-TP304	4
ASTM A312-TP304L	4L
ASTM A312-TP316	S
ASTM A312-TP316L	L
ASTM A335-P11	C11
ASTM A335-P22	C22
ASTM A106-B	C6B